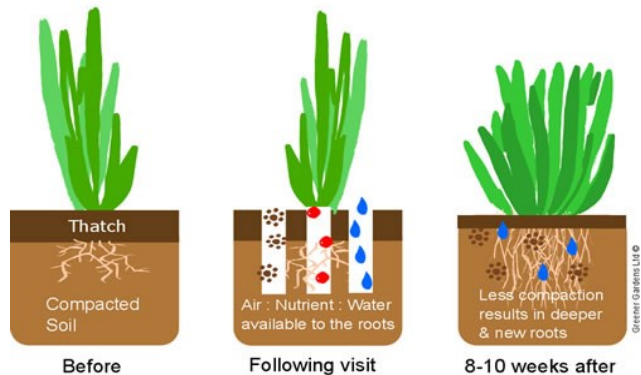


# Let The Lawn Breathe

## Drought Recovery Treatment



Scan for more info



### Benefits of Let the Lawn Breathe (Aeration)

There are many reasons for aeration, its not exclusively for the management and reduction of compaction. Regular aeration, solid tine or hollow tine will allow air and water to get to the roots improving the lawns health and aids stronger root growth. Many greenkeepers recommend annual aeration as a must for a healthy lawn.

### Why Drought Recovery Let the lawn breathe?

It's a great way to help the soils re hydrate, the wetting agent and soil biology booster will help boost soil health to help your lawn recover ready for 2023 .

### What is included in Let the lawn breathe?

Overview: Aeration and Drought Recovery Wetting agent and Soil Health tonice

**Aeration** will punch holes in the lawn relieving compaction, this allows water and nutrients to pass into the root zone. This aids gaseous exchange for healthy soil and helps to improve drainage, stopping water sitting in the thatch layer, a drier top surface discourages moss and disease.

We complete **Aeration** in two different formats depending on the conditions, these are;

**Hollow Tine** punches holes through sub surface thatch , the plugs are removed from the lawn.

**Solid Tine** aeration spikes holes in your lawn, with this method nothing is removed.

**Soil Improver** An application of Soil Improver will aid recovery, and help natural aeration, it contains Gypsum and other natural micro nutrients for soil deflocculation and improved soil friability.

We recommend **Emerald lawn** as part of your ongoing annual lawn care programme.

### Benefits of Let the lawn breathe /Aeration

- Promotes a healthy looking lawn
- Encourages new growth
- Improves drainage of the lawn
- Nutrient access to the root system
- Aids gaseous exchange
- Discourages moss and disease

Creating your

# Integrated Approach

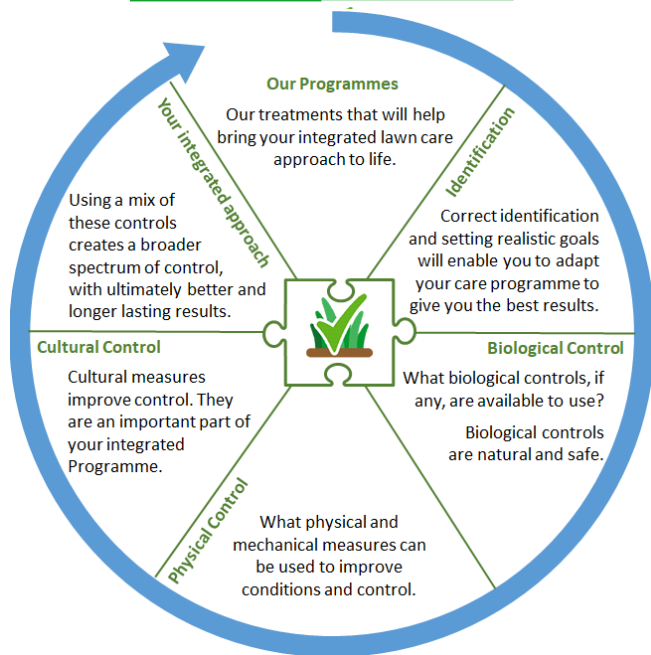
Working Together : Treating Safely

We work in partnership with you to help you create ...

**“a lawn to be proud of in a garden to relax and enjoy”.**

Sustainable lawn care is about combining mechanical, physical cutting and a balance feed programme which is safe for You, The Environment applied safely.

## TreatSafe



**“Creating a lawn you can love, and a space to create memories. . .”**

### Identification

Our team understand that lawn care can be complicated, we give your lawn the best care using tested, proven products whilst integrating this with labour intensive mechanical techniques which are good for your lawn and the environment.

### Biological Controls

We have a range of natural treatments and biological controls to improve your lawn.

### Physical and Mechanical

- Applying the correct nutrition at the right time is key
- Maintaining a frequent cutting programme encourages a thicker sward

### Cultural Controls

- Annual Aeration is vital for water and air penetration plus releases stale air.
- Reduce weed germination and thatch by annual scarification
- Over seeding introduces new grasses for an even colour and consistency

### Your Integrated approach

- Ensure lawn is well fertilised
- Maintain a pro active lawn cutting routine
- Annual Aeration
- Bi Annual Scarification and Over Seeding for the best health

### Our recommended programme

Care Plan: **Emerald Lawn** programme

It includes our **Soil Enrichment** and **Let the lawn breathe** treatment every **12 months**